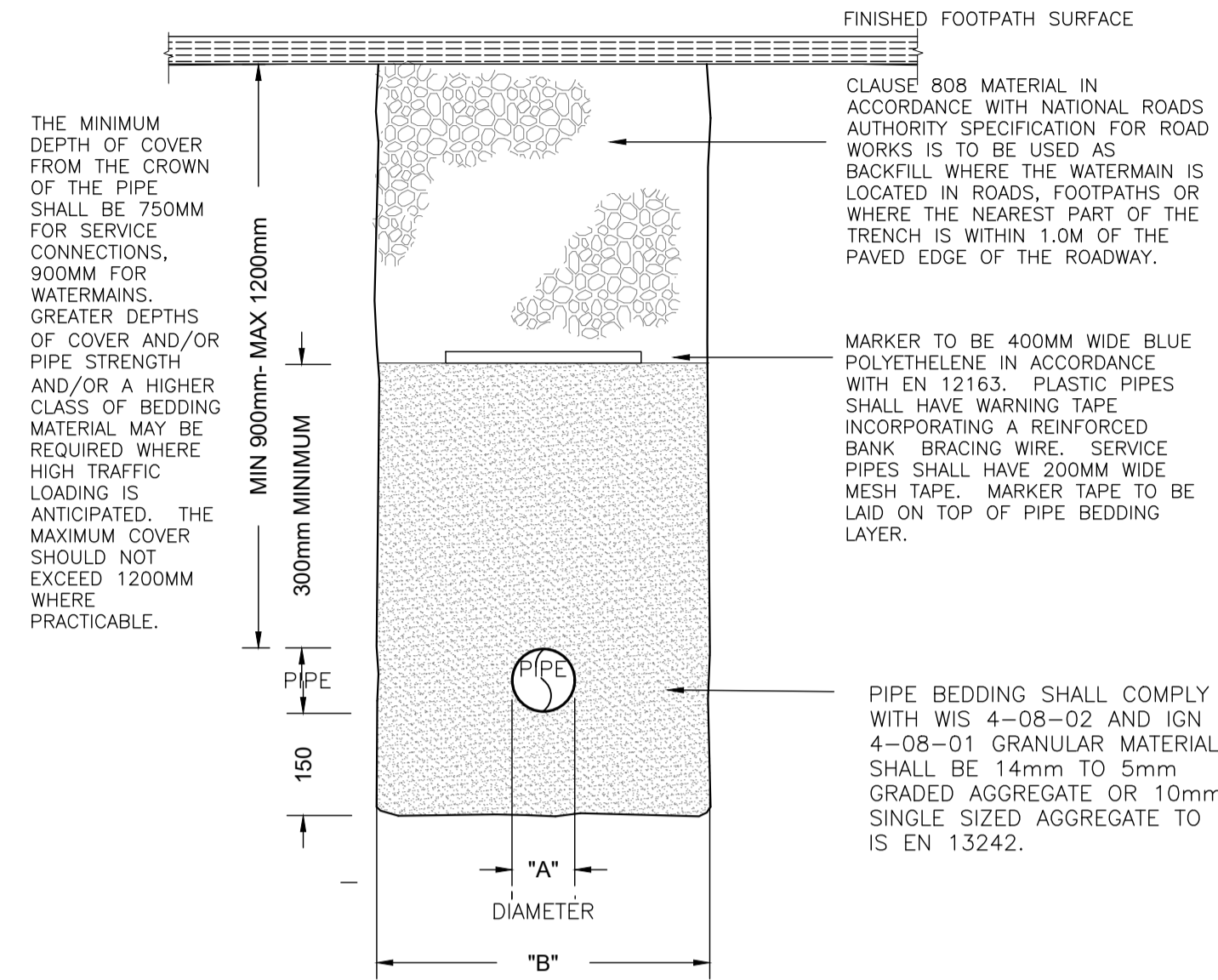


# ALL WATER INSTALLATIONS TO COMPLY WITH IRISH WATER CONNECTION AND DEVELOPER SERVICES

## WATER INFRASTRUCTURE STANDARD DETAILS



BEDDING DETAILS ACROSS ROADS & FOOTPATHS  
TO IRISH WATER DRAWING STD-W-13.

TYPICAL TRENCH DETAILS (scale 1:20)

THE MINIMUM DEPTH OF COVER FROM THE CROWN OF THE PIPE SHALL BE 750MM FOR SERVICE CONNECTIONS, 900MM FOR WATERMANS. GREATER DEPTHS OF COVER AND/OR PIPE STRENGTH AND/OR A HIGHER CLASS OF BEDDING MATERIAL MAY BE REQUIRED WHERE HIGH TRAFFIC LOADING IS ANTICIPATED. THE MAXIMUM COVER SHOULD NOT EXCEED 1200MM WHERE PRACTICABLE.

MIN 900mm- MAX 1200mm

300mm MINIMUM

150

PIPE

150

"A"  
DIAMETER

"B"

CLASSE B08 MATERIAL IN ACCORDANCE WITH NATIONAL ROADS AUTHORITY SPECIFICATION FOR ROAD WORKS IS TO BE USED AS BACKFILL WHERE THE WATERMAIN IS LOCATED IN ROADS, FOOTPATHS OR WHERE THE NEAREST PART OF THE TRENCH IS WITHIN 1.0M OF THE PAVED EDGE OF THE ROADWAY.

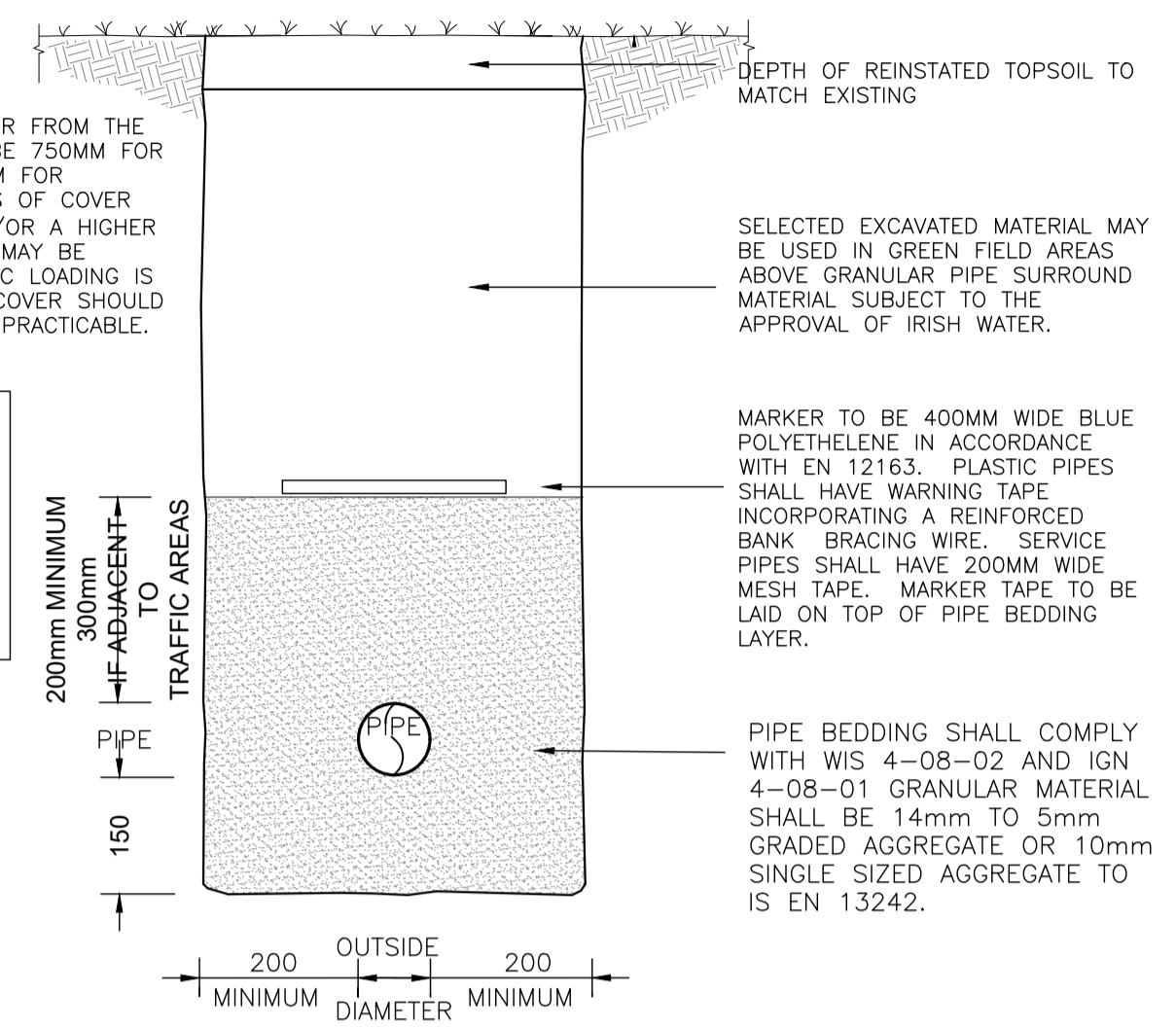
MARKER TO BE 400MM WIDE BLUE POLYETHYLENE IN ACCORDANCE WITH EN 12163. PLASTIC PIPES SHALL HAVE WARNING TAPE INCORPORATING A REINFORCED BANK BRACING WIRE. SERVICE PIPES SHALL HAVE 200MM WIDE MESH TAPE. MARKER TAPE TO BE LAID ON TOP OF PIPE BEDDING LAYER.

PIPE BEDDING SHALL COMPLY WITH WIS 4-08-02 AND IGN 4-08-01 GRANULAR MATERIAL SHALL BE 14mm TO 5mm GRADED AGGREGATE OR 10mm SINGLE SIZED AGGREGATE TO IS EN 13242.

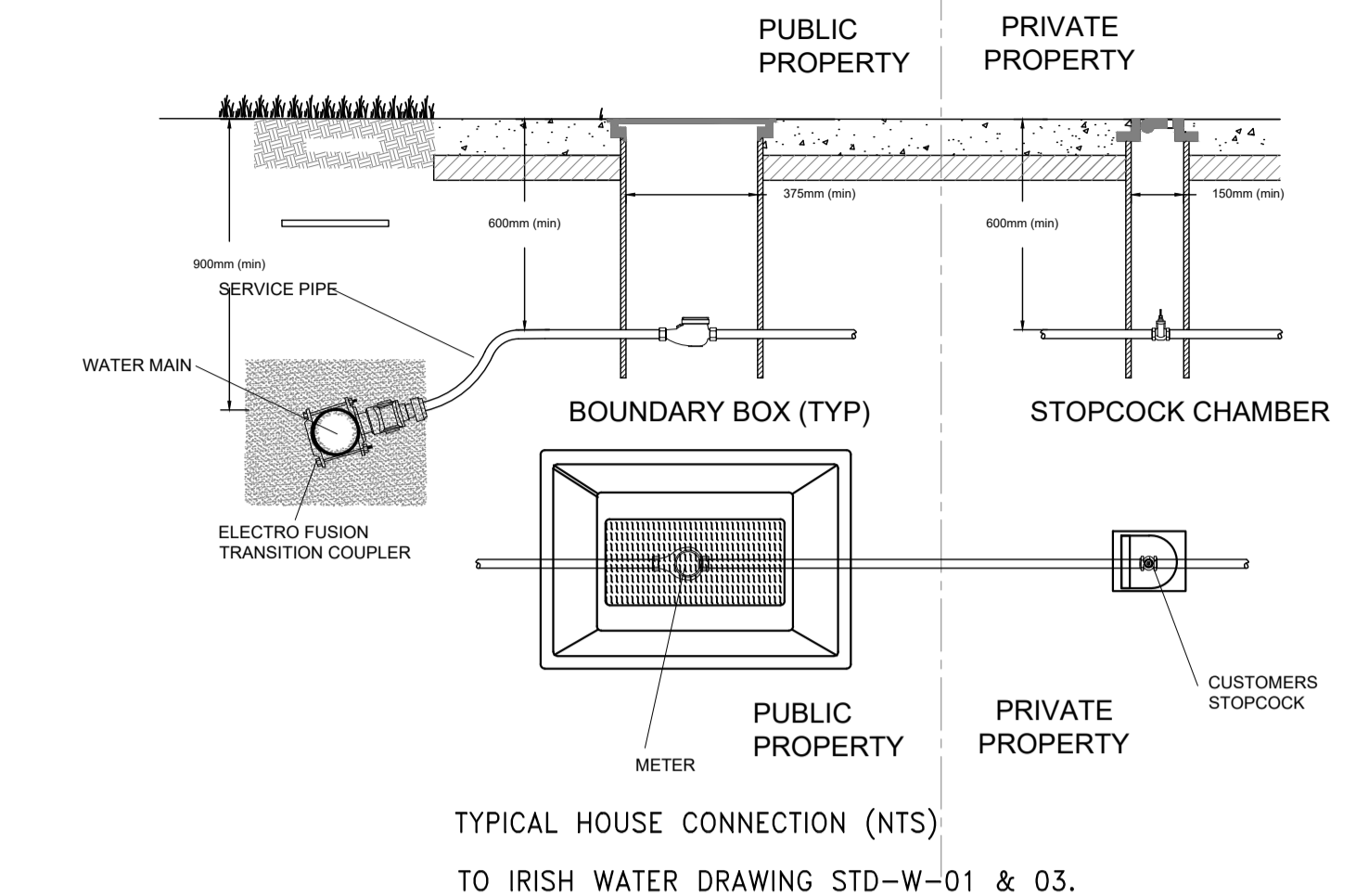
NOTES:

- IF TRENCH BOTTOM CONTAINS ROCK, THEN A MINIMUM OF A 300mm PIPE BEDDING SHALL BE USED.

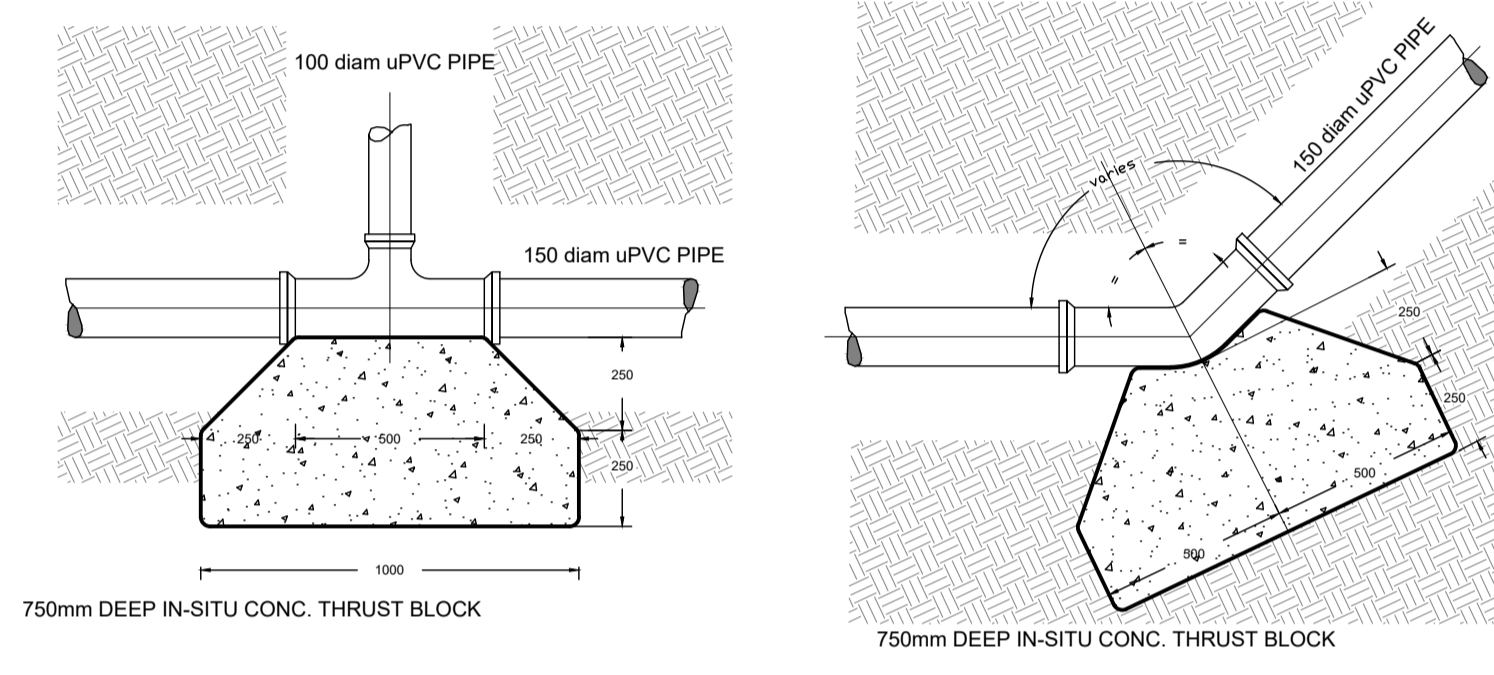
PIPE DIAMETER "A" (mm)	TRENCH WIDTH "B" (mm)
100	500
150	600



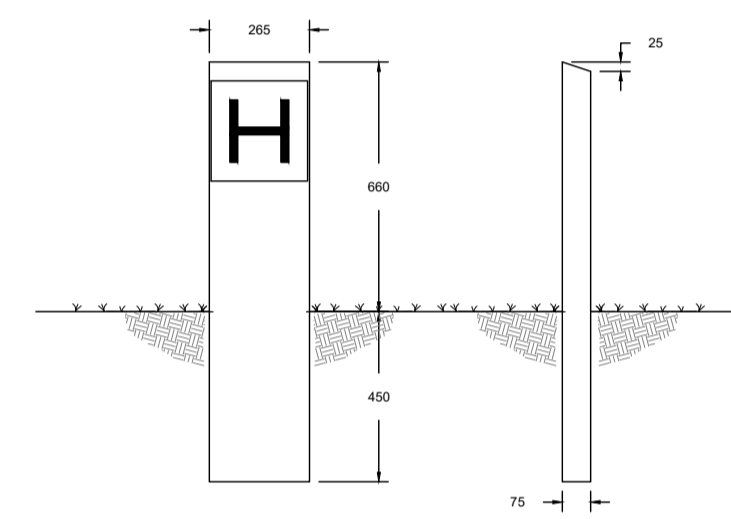
BEDDING DETAILS ACROSS OPEN SPACE  
TO IRISH WATER DRAWING STD-W-13.



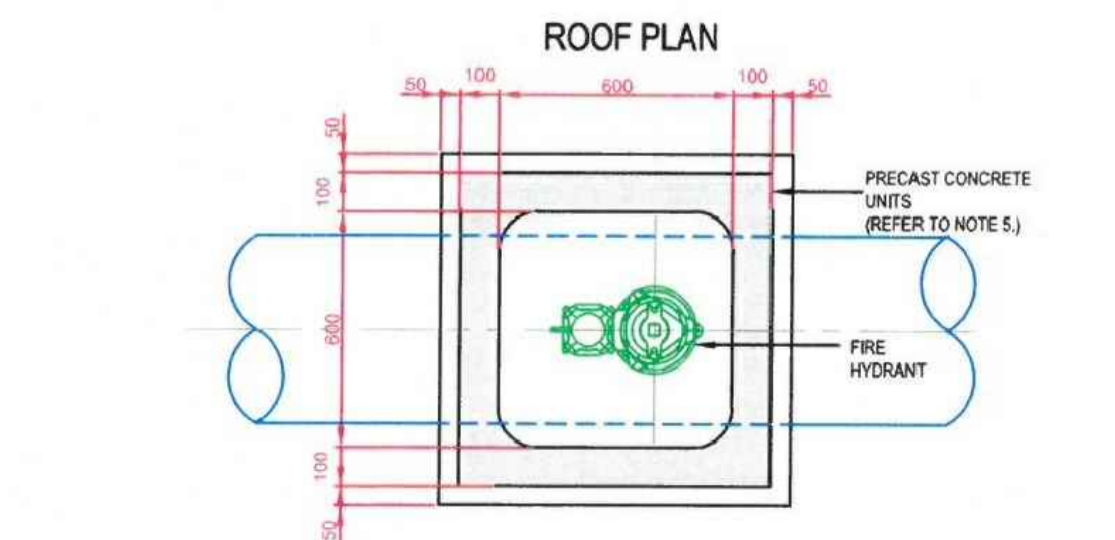
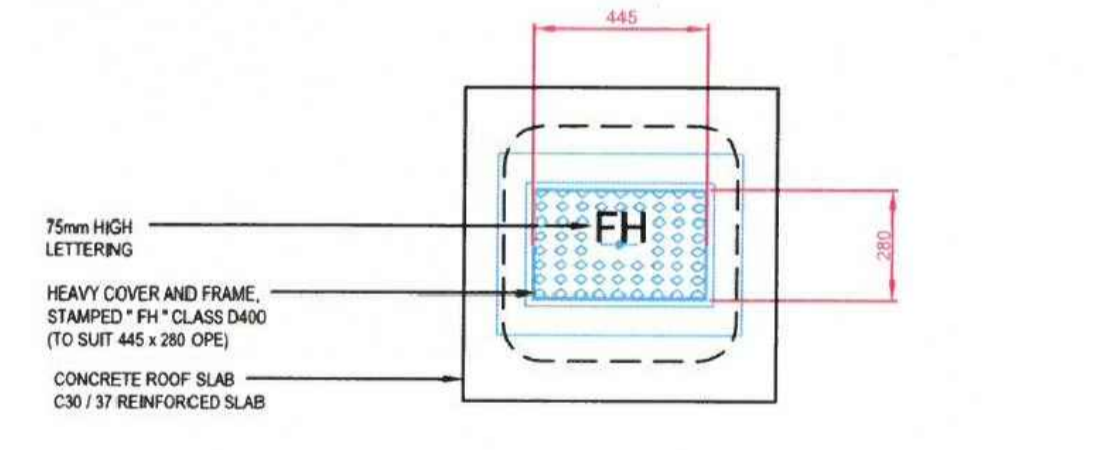
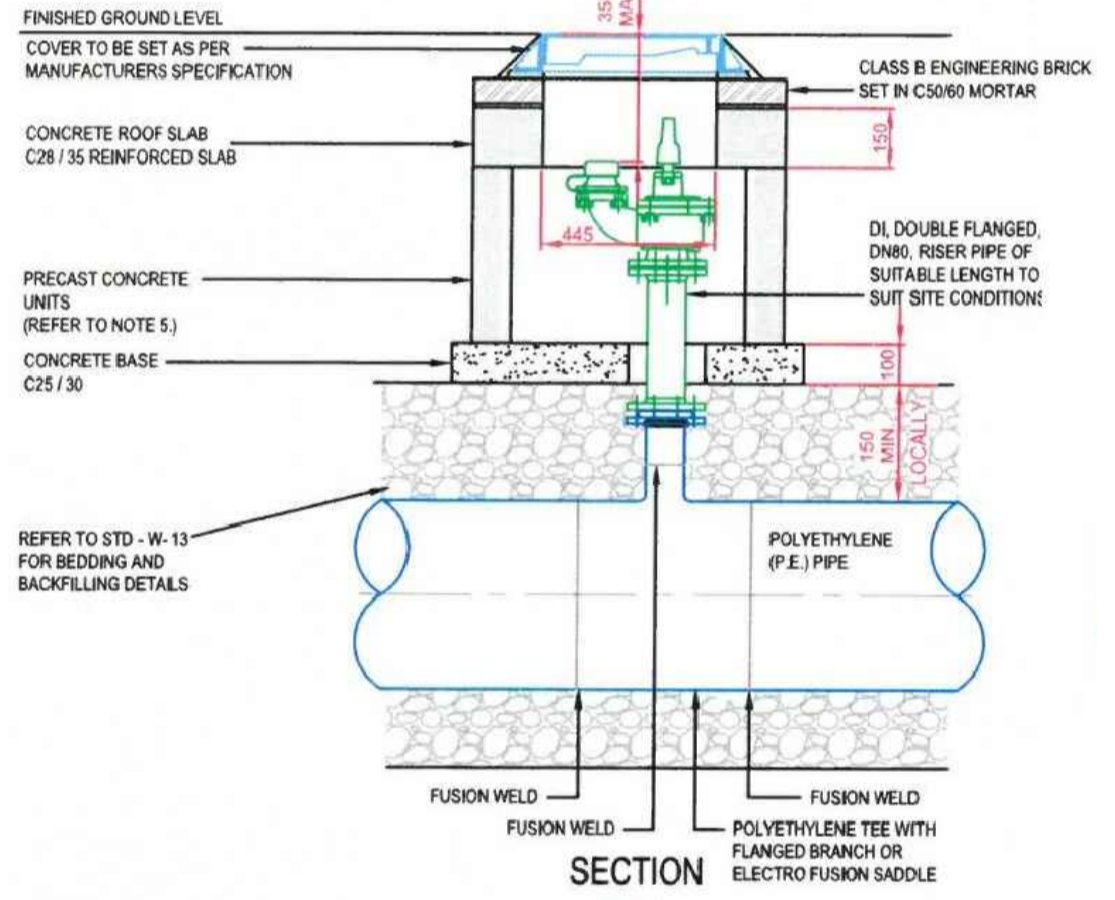
TYPICAL HOUSE CONNECTION (NTS)  
TO IRISH WATER DRAWING STD-W-01 & 03.



THRUST BLOCK DETAILS (scale 1:20)  
TO IRISH WATER DRAWING STD-W-28.

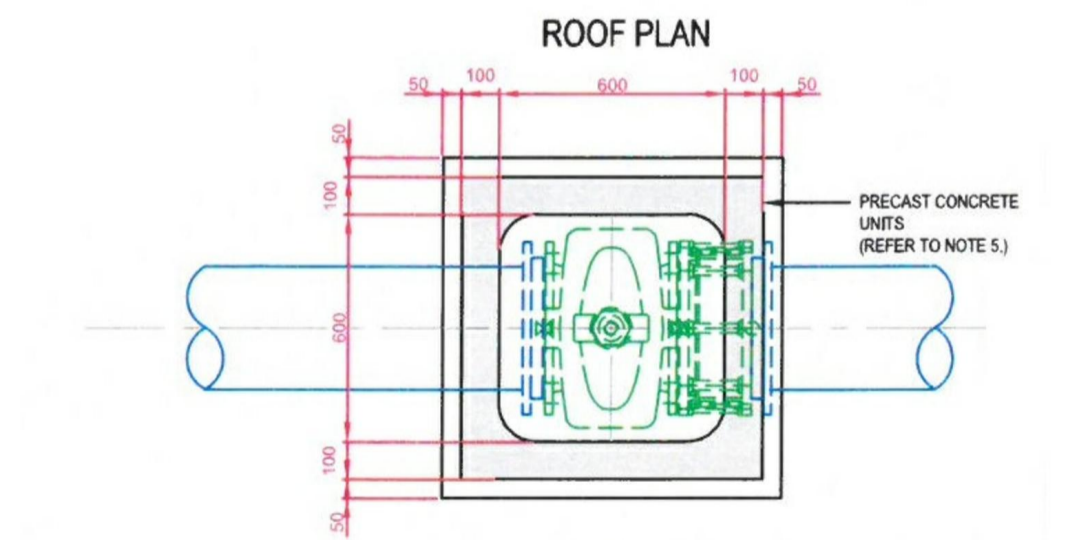
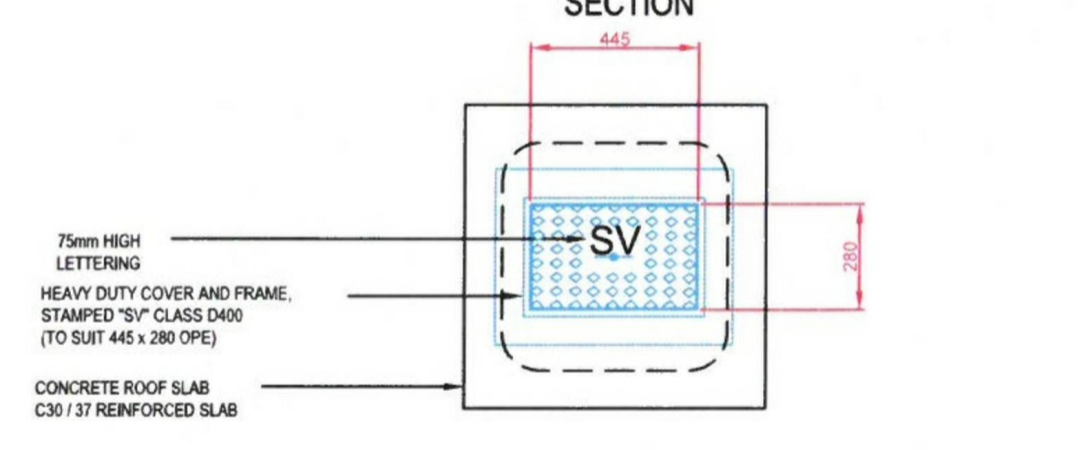
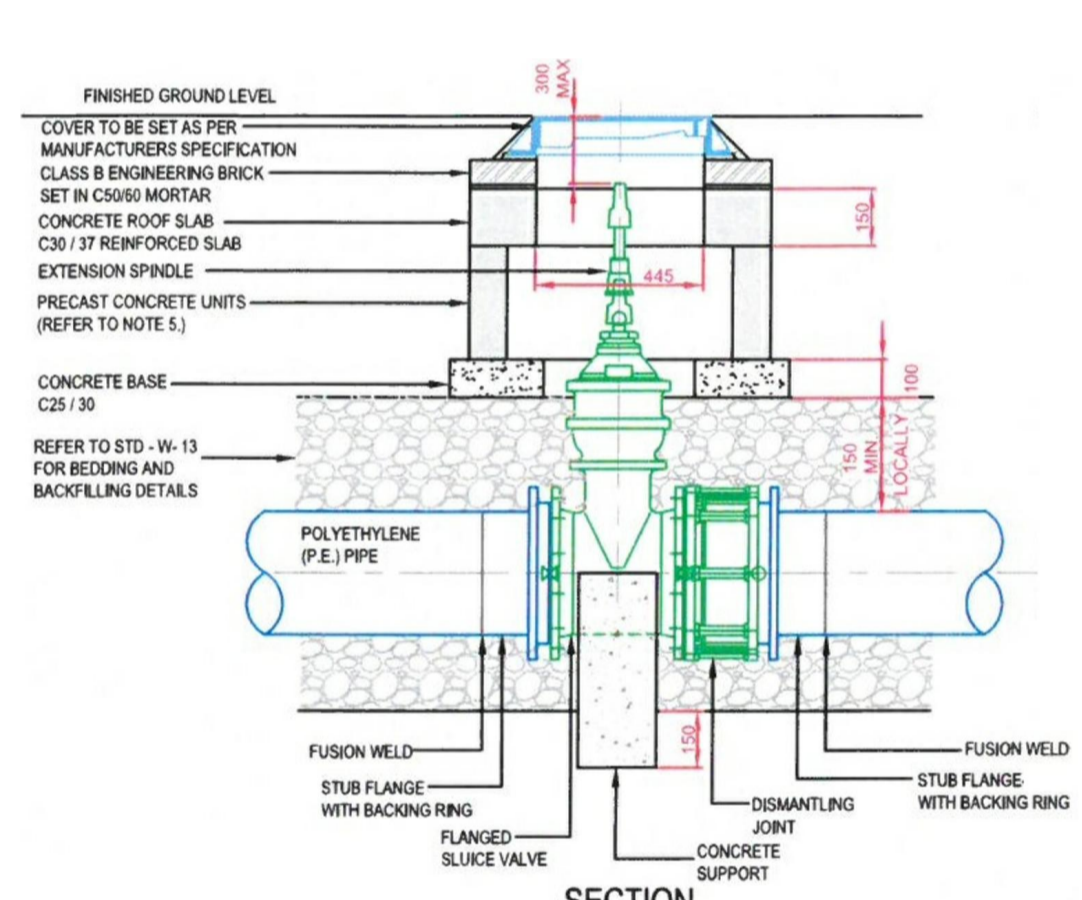


CONCRETE MARKER POST (scale 1:20)  
TO IRISH WATER DRAWING STD-W-27.



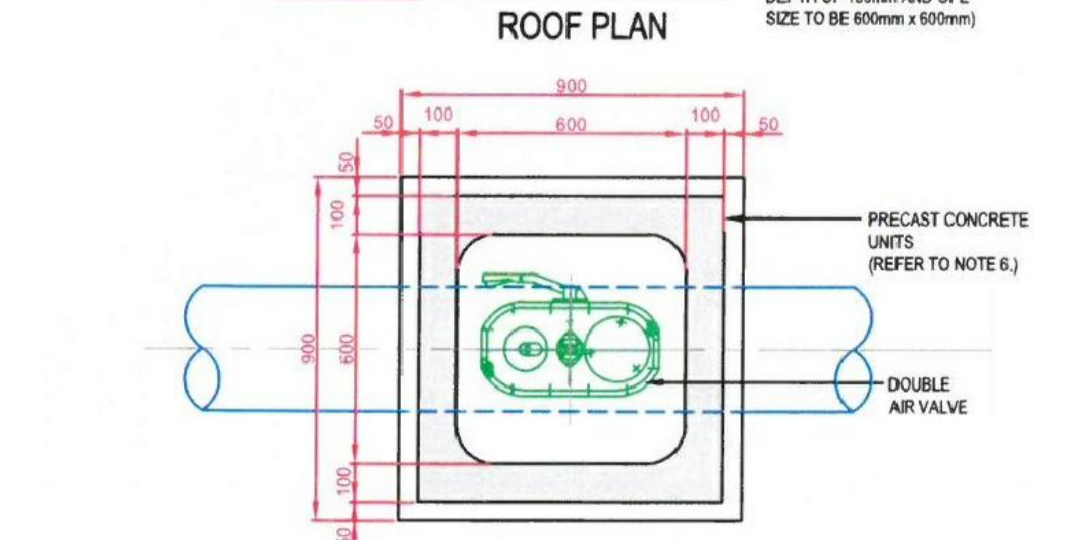
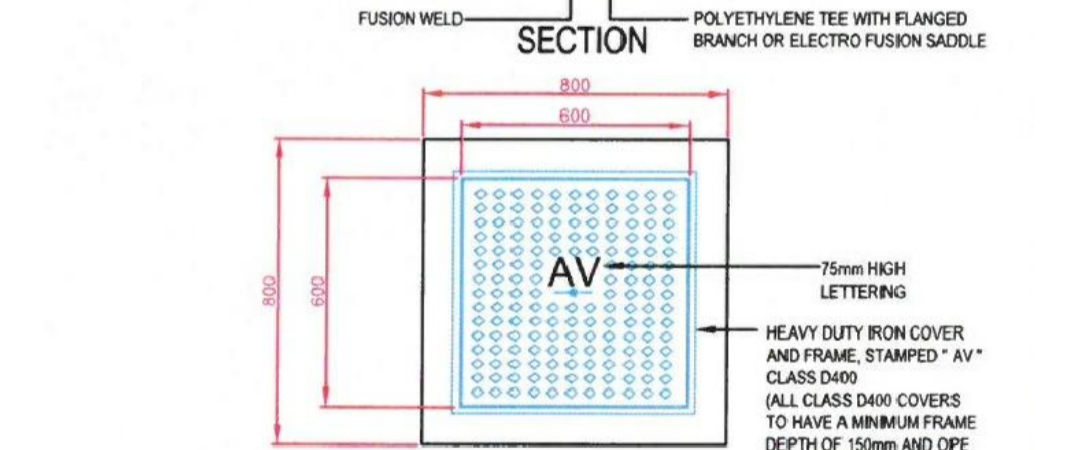
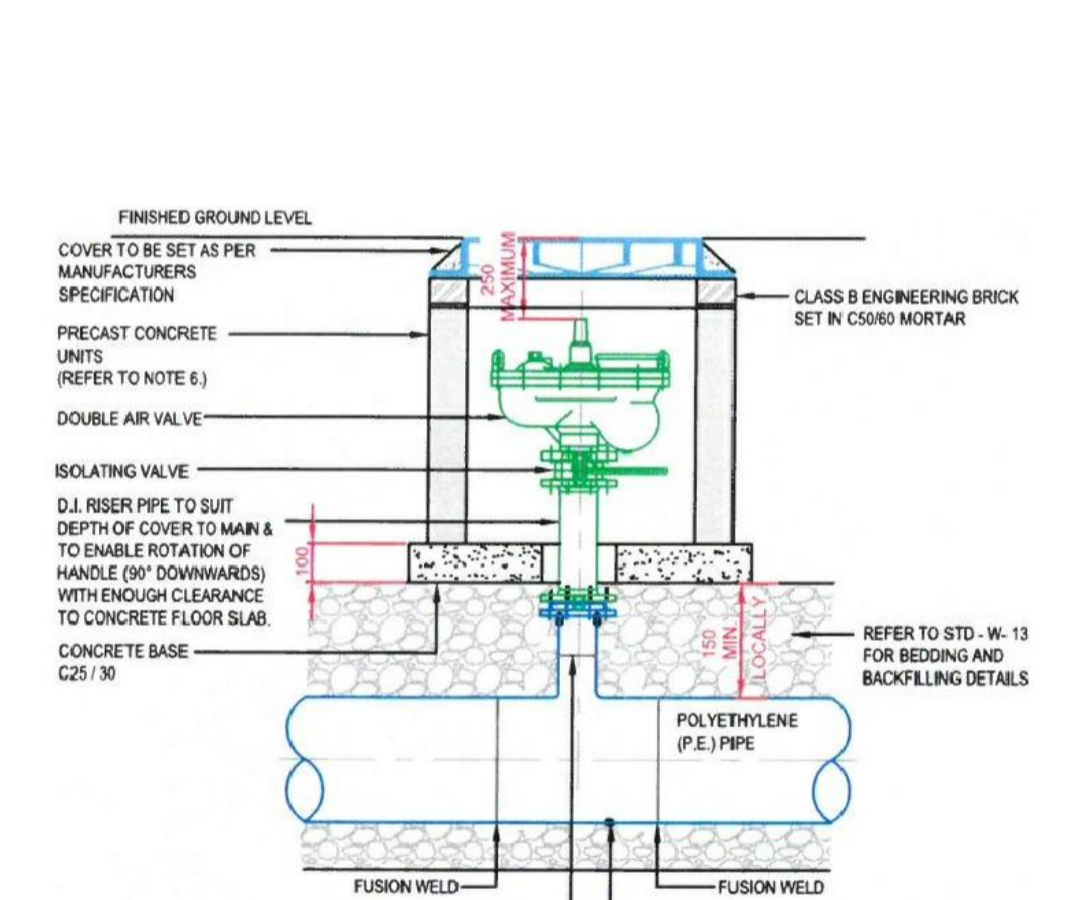
FIRE HYDRANT CHAMBER  
(PRECAST CONCRETE CONSTRUCTION)

FIRE HYDRANT DETAILS (scale 1:20)  
TO IRISH WATER DRAWING STD-W-18.  
FOR CONSTRUCTION DETAIL.



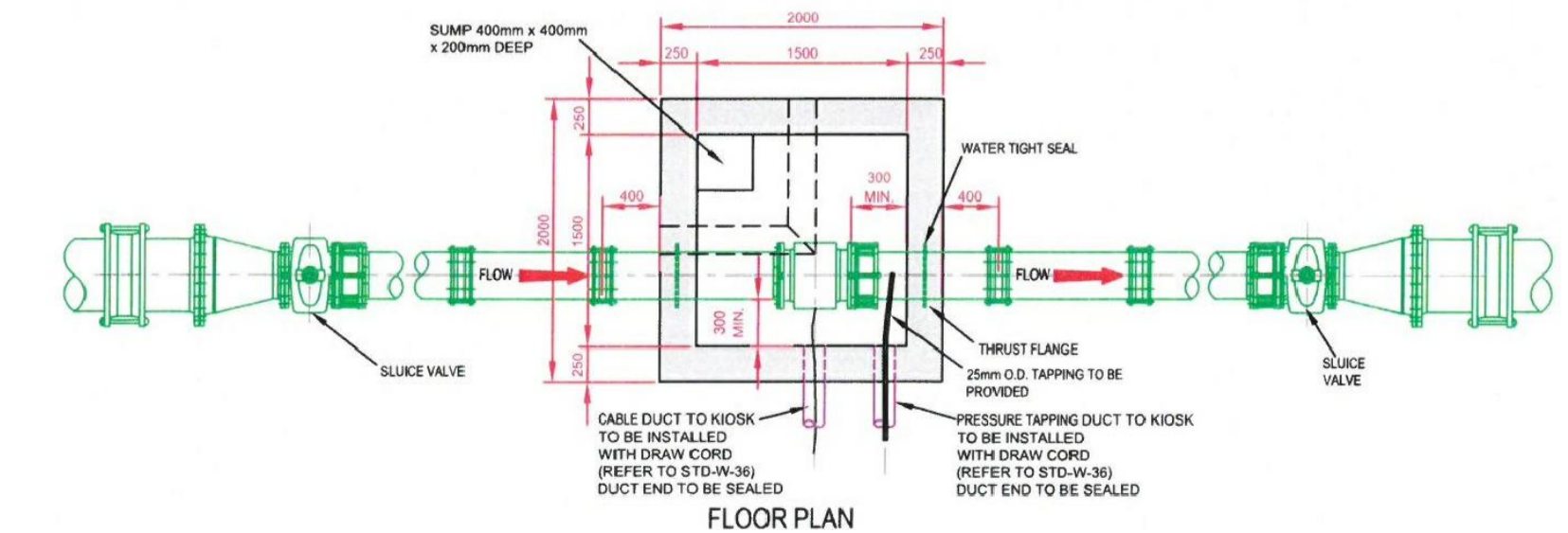
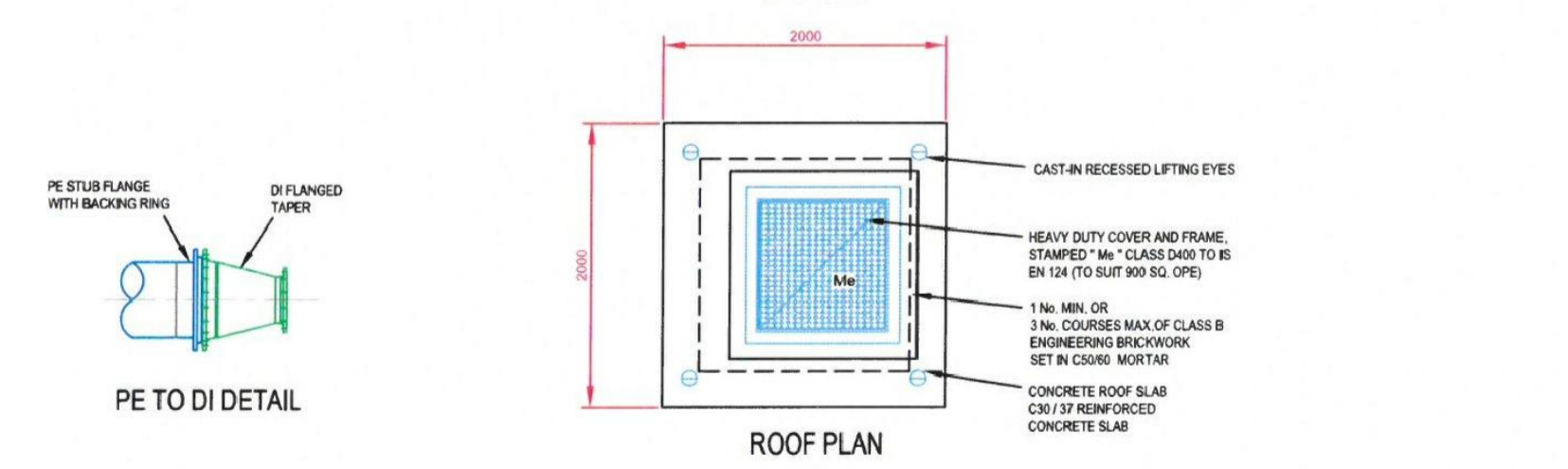
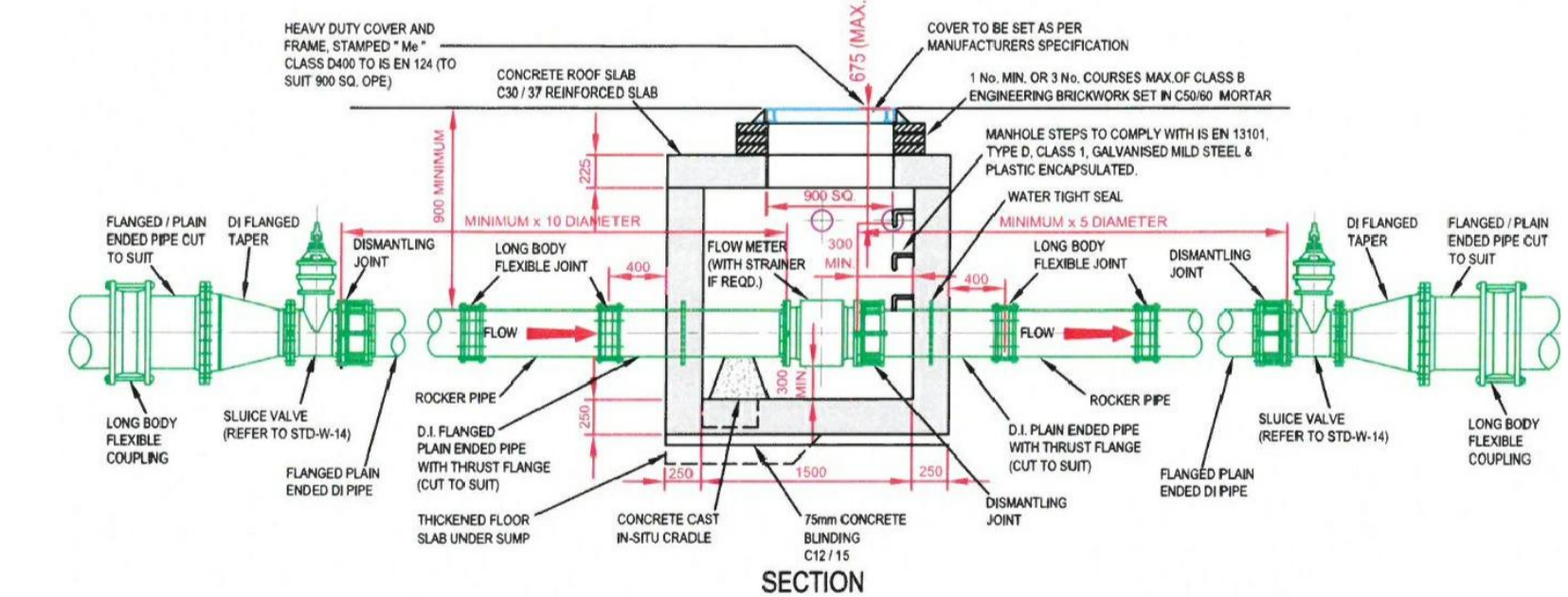
SLUICE VALVE CHAMBER  
(PRECAST CONCRETE CONSTRUCTION)

SLUICE VALVE DETAILS (scale 1:20)  
REFER TO IRISH WATER DRAWING STD-W-15  
FOR CONSTRUCTION DETAIL.



AIR VALVE CHAMBER  
(PRECAST CONCRETE CONSTRUCTION)

AIR VALVE DETAILS (scale 1:20)  
REFER TO IRISH WATER DRAWING STD-W-22  
FOR CONSTRUCTION DETAIL.



METER CHAMBER (scale 1:50)  
REFER TO IRISH WATER DRAWING STD-W-26  
FOR CONSTRUCTION DETAIL.

**GENERAL NOTES:**

The Developer/Contractor/Builder is to ensure that the building under construction/alteration is to comply where applicable with the 2010 Building Regulations in respect of all trades involved in the construction of this development.

The Developer/Contractor/Builder should notify BCA of any intended deviations from these plans prior to commencement of development.

All Site Development works to be carried out in accordance with "Recommendations for Site Development Works for Housing Areas" Dept. of Environment.

Contractors must verify all dimensions at the job before commencing any work. No working dimensions to be scaled. This drawing is for the purpose of planning only. Dimensions to blockwork only.

Revision	Date	Rev.

NOTES:

ALL WORKS TO COMPLY WITH IRISH WATER CONNECTION AND DEVELOPER SERVICES WATER INFRASTRUCTURE STANDARD DETAILS

- ALL HOUSE CONNECTIONS IN ACCORDANCE WITH DRG. NO. STD-W-03
- GENERAL PIPE CONNECTIONS IN ACCORDANCE WITH DRG. NO. STD-W-05 TO 10
- SEPERATION DISTANCES IN ACCORDANCE WITH DRG. NO. STD-W-11
- TRENCH BACKFILLING IN ACCORDANCE WITH DRG. NO. STD-W-13
- ALL PIPES TO BE PE WITH PE80 PR100 RATING. ALL PIPES SHALL BE BLUE IN COLOUR. HOPE PIPES SHALL BE OF A TYPE PE40 AND HAVE AN SDR11 OR SDR11 RATING. THEY SHALL CONFORM TO IS EN 20221 PART 1 AND PART 2 (PLASTIC SYSTEMS FOR WATER SUPPLY, DRAINAGE AND SEWERAGE UNDER PRESSURE - PART 1, GENERAL, AND PART 2, PIPES) AND IS EN 12201 (PLASTIC SYSTEMS FOR WATER SUPPLY, DRAINAGE AND SEWERAGE UNDER PRESSURE - PART 3 FITTINGS).
- PUSH IN RUBBER RING JOINTS SHALL BE PLACED IN ACCORDANCE WITH MANUFACTURERS' INSTRUCTIONS FOR THE PIPE MATERIAL.

Client: Westar Investments Ltd.

Job: Clane KDA1 SHD

Location: Lands at Capdoo & Abbeylands, Clane, Co. Kildare  
Drawing Title: SERVICES - Watermain Details (SHEET 2 of 3)

CCO brian connolly associates CONSULTING ENGINEERS

BSc Eng. MSc, DIC, C.Eng. MIEI  
The Studio, 'Wood's Way', Clane, Co. Kildare. T. 045 892211 F. 045 892420

e: bcassoc@eircom.net

Planning - SHD 02c

job no	18002
date	02.11.18
scale	As Shown @A1
drawn by	Brian Connolly
cad ref no	300
planning ref no	
fire ref no	
drawing no.	18002-303-15